

Go to www.vtechphones.com to register your product for enhanced warranty support and latest VTech product news.

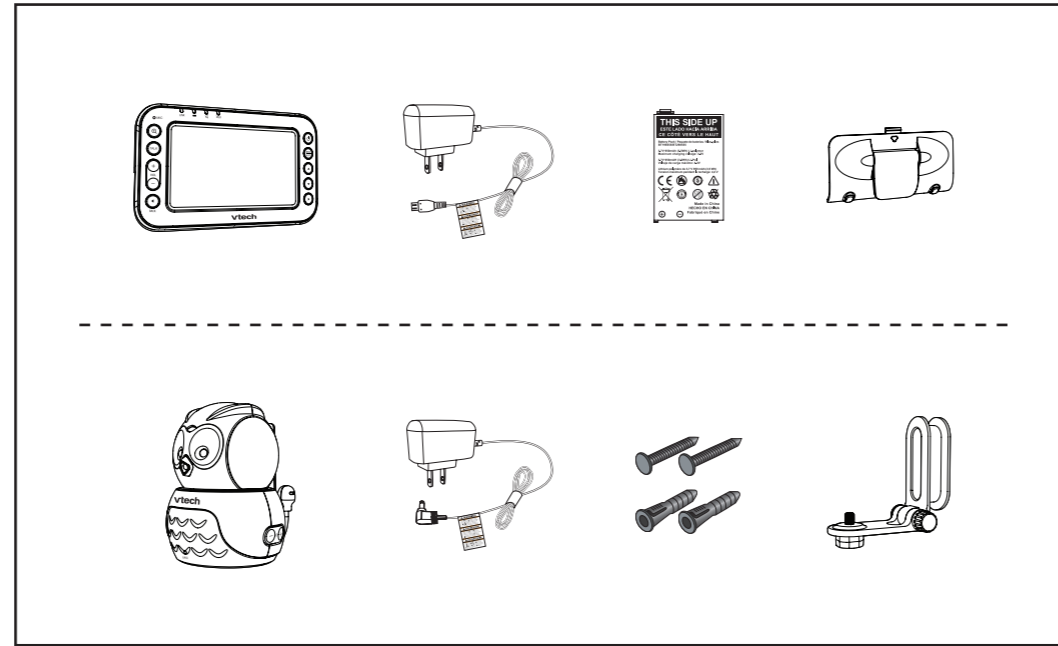
VM344

vtech

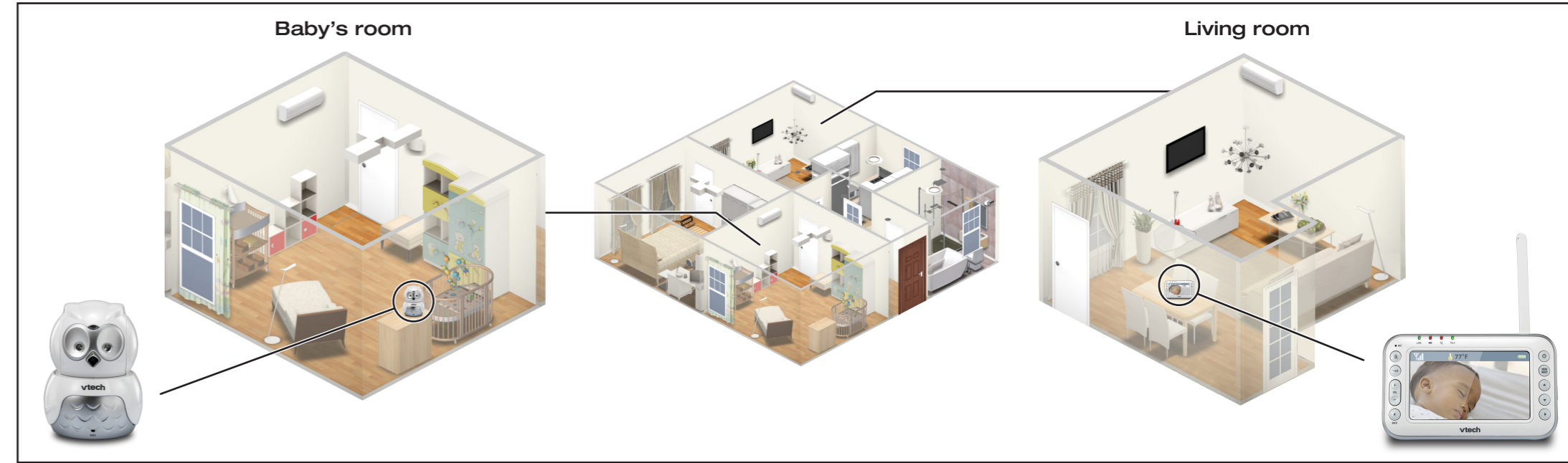
Quick start guide



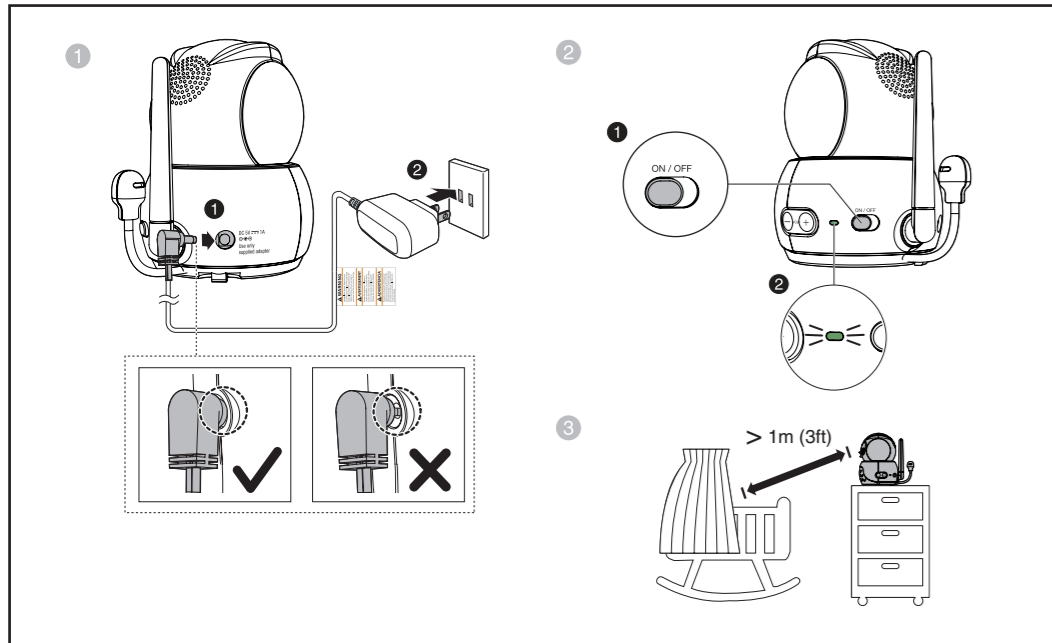
What's in the box



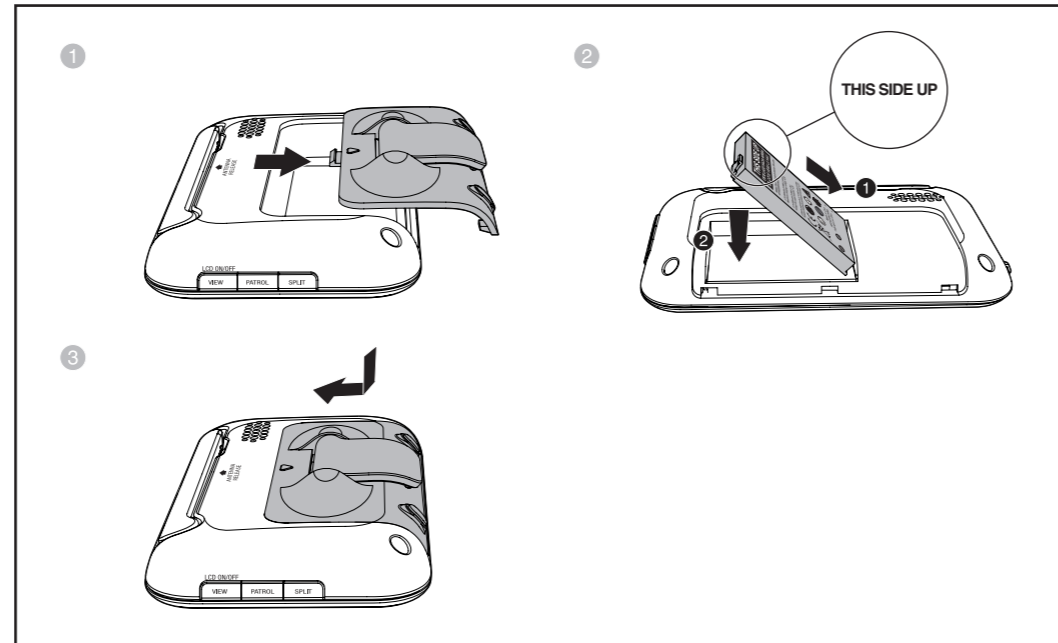
VM344 baby monitor system



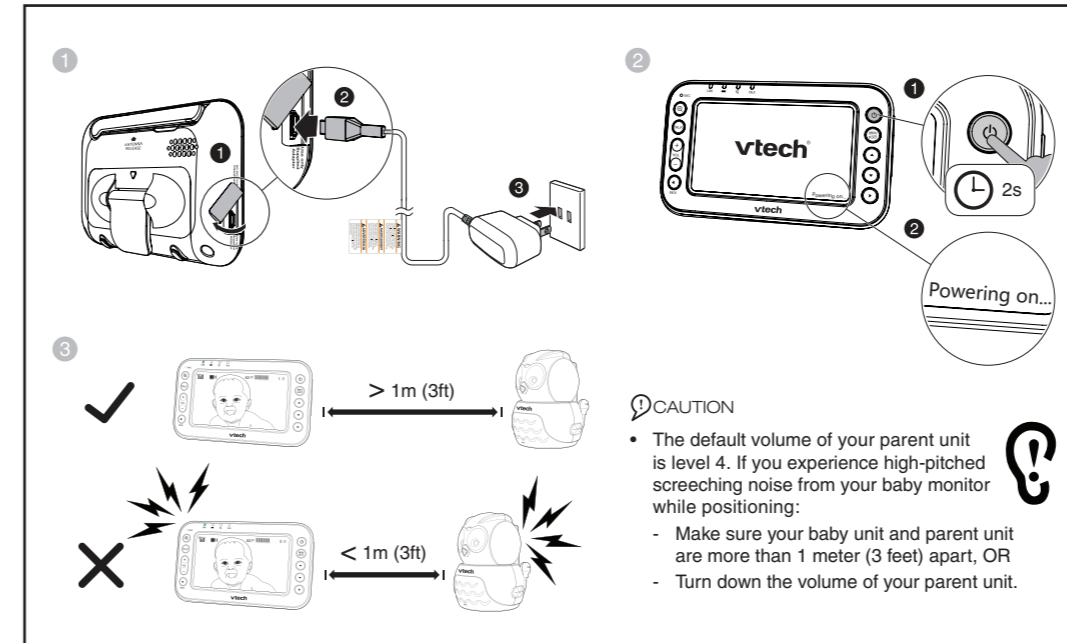
1 Connect and power on - Baby unit



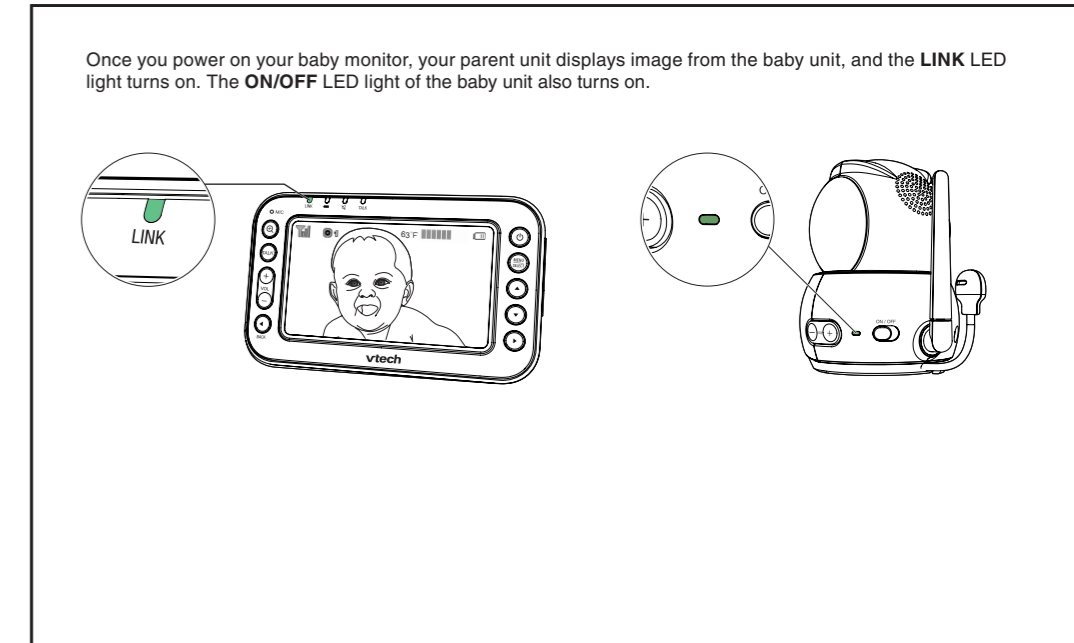
2 Install the battery



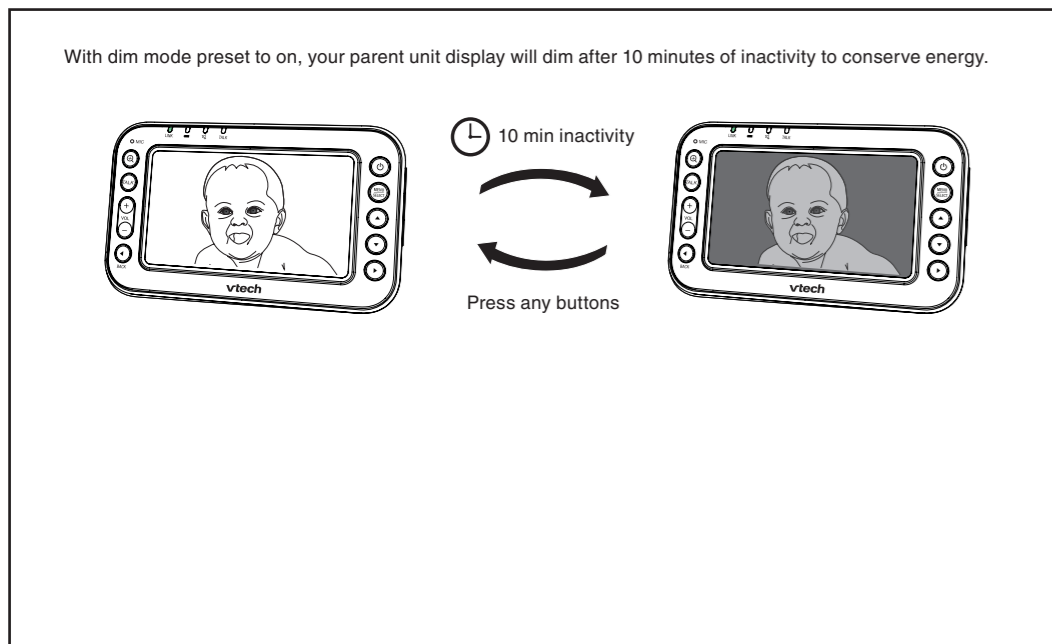
3 Connect and power on - Parent unit



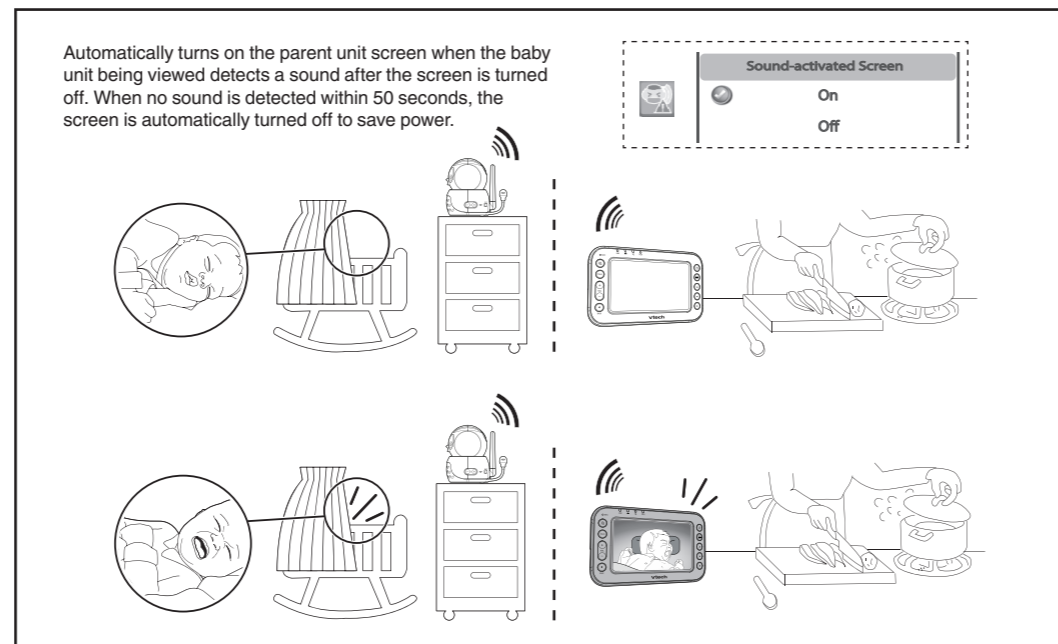
4 Status check



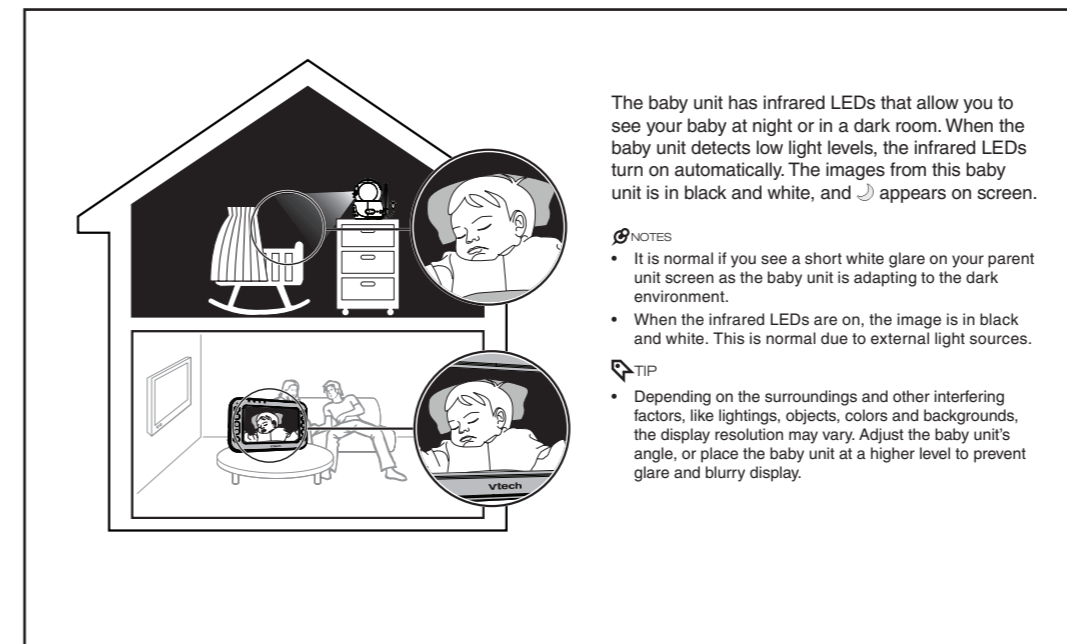
Dim mode



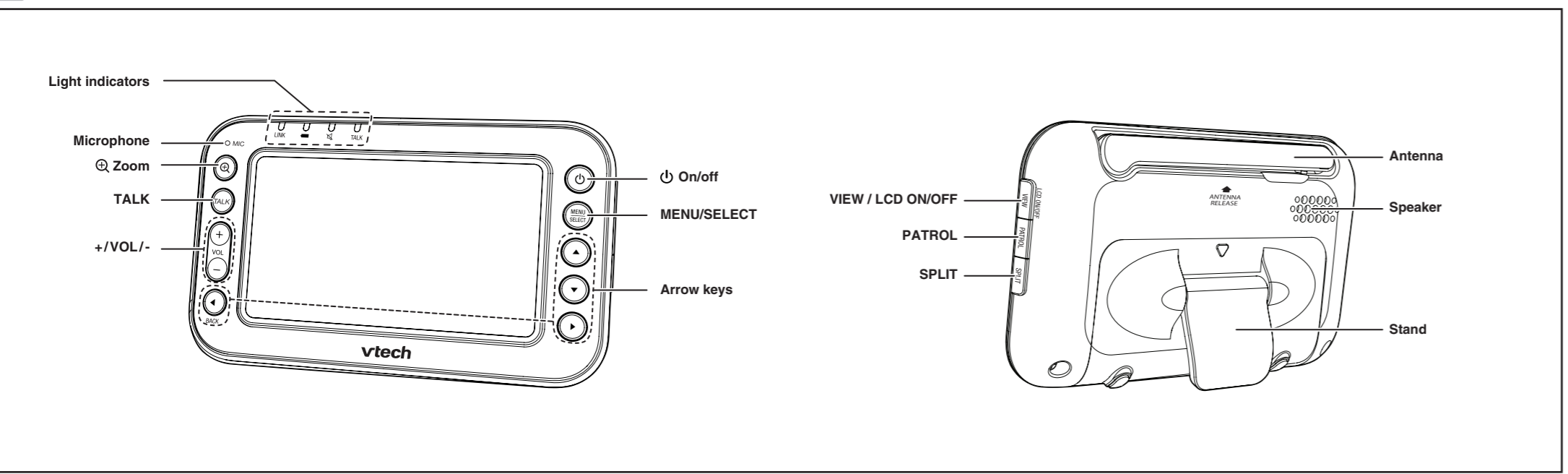
Sound activation



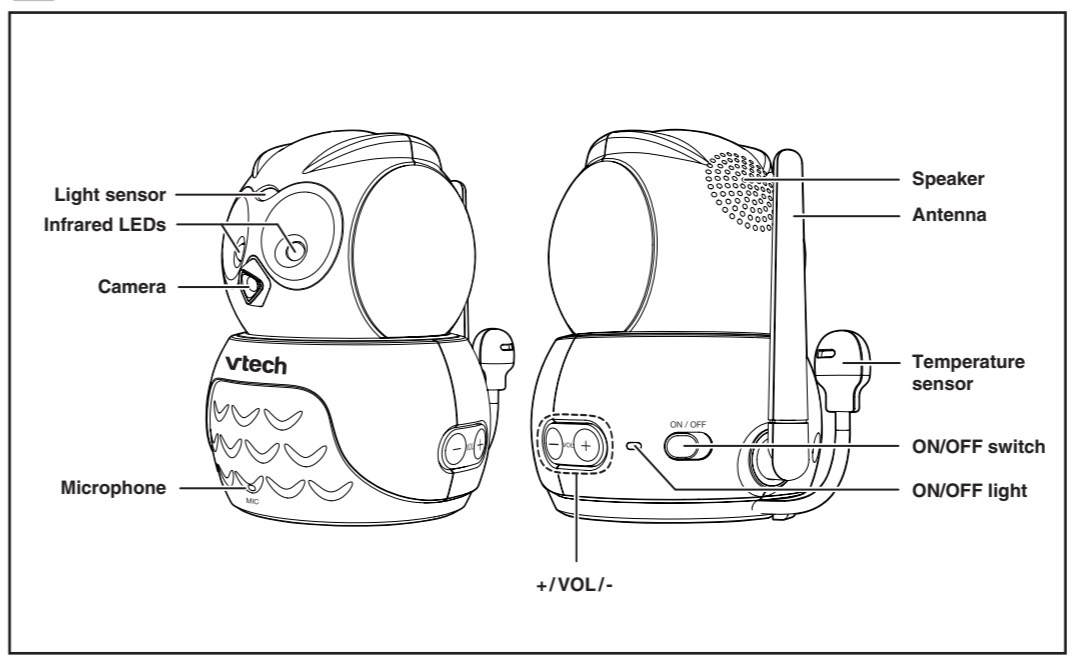
Night vision



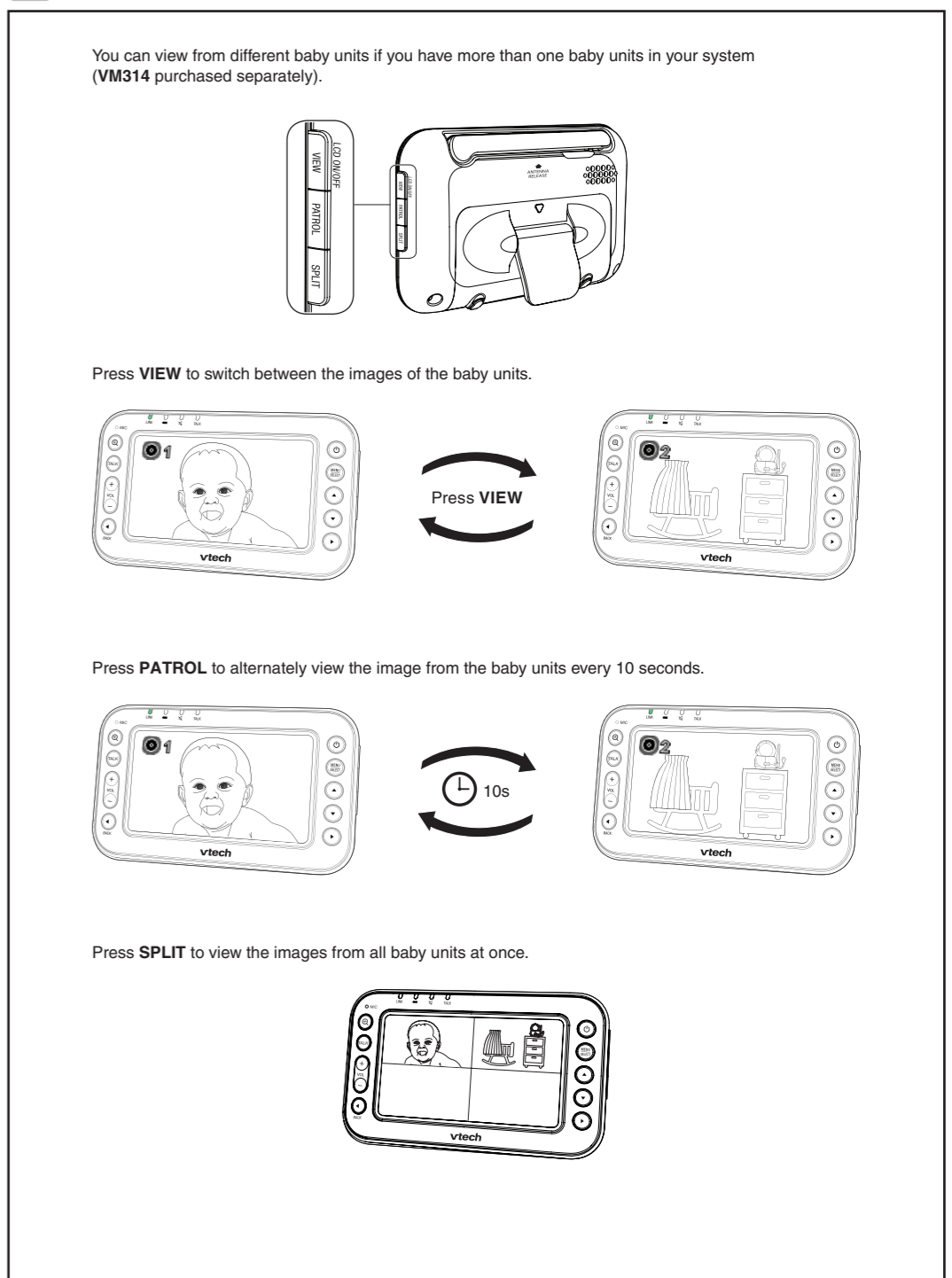
Overview - Parent unit



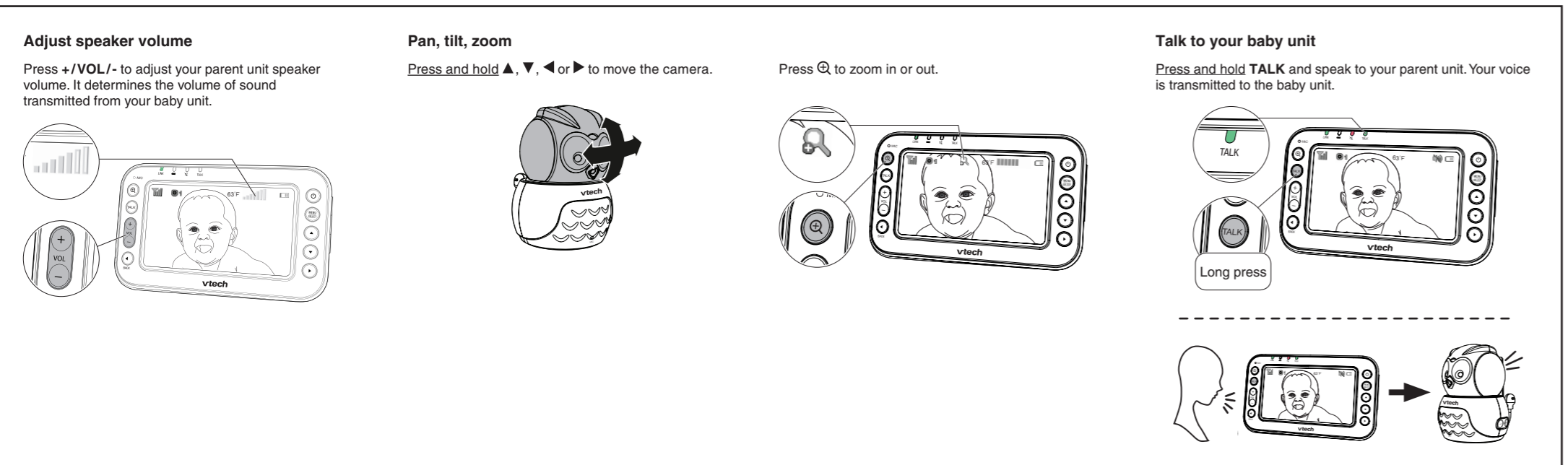
Overview - Baby unit



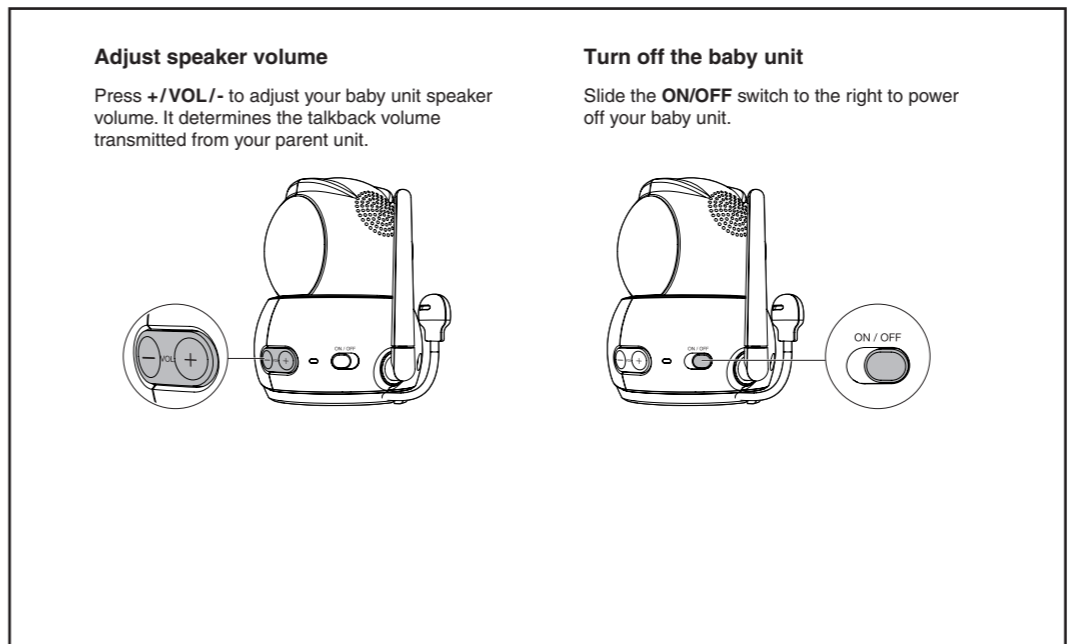
Change different views (require additional baby units - VM314)



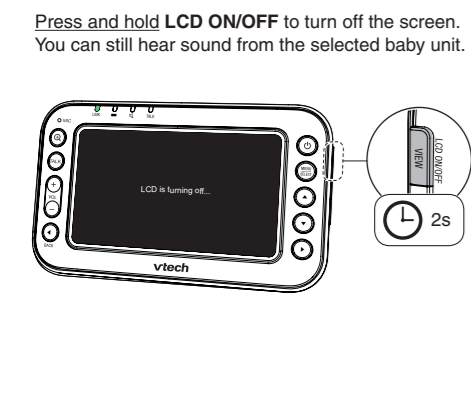
Basic operation - Parent unit



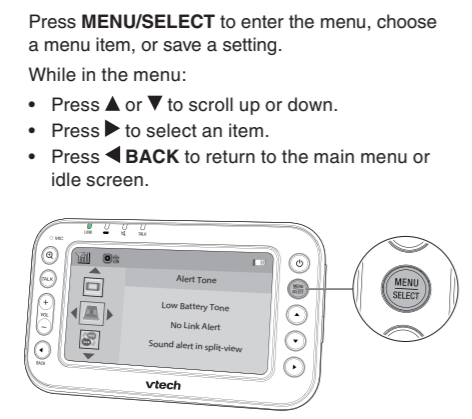
Basic operation - Baby unit



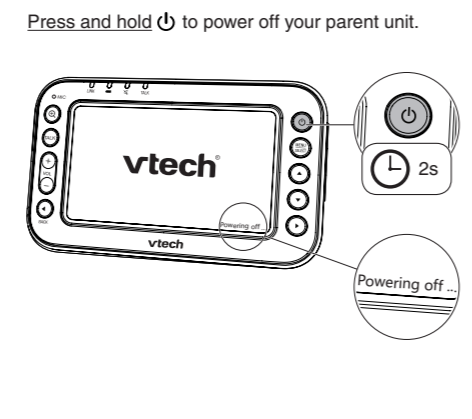
Turn off the screen



Use the menu



Turn off the parent unit



Mount the baby monitor (optional)

